

# PALEFIRE



7 VANGUARD COURT  
LONDON SE5 8QT

PALEFIRESTUDIO.COM  
INFO@PALEFIRESTUDIO.COM

# U/V COLLECTION

The U/V collection – whose title is a visual reference to each light's modular composition of U and V shapes – takes paper pulp as its medium to create lighting for the home that is sculptural and balanced, yet playfully imperfect.

We chose to work with recycled paper pulp because it's environmentally friendly, and has a natural, tactile finish, similar to plaster or ceramic.

Palefire brings together exuberant colour play and conscious design practices to create joyful decorative homeware.

# FLOOR LAMPS

# TOTEM FLOOR LAMP

Our most ambitious design yet, the Totem is the embodiment of the Palefire ethos to blur the historically distinct lines between domestic design and 'fine art'. A hybrid art piece and uplighter floor lamp that looks to the ideas of Brancusi, in particular his play with the role of the base and how it incorporates into the rest of the sculpture. The Totem, which also took inspiration from Italian mid-century glass lamps, experiments with the effect of stacking and repeated shapes to make a dramatic, architectural column-like form.



# WALL LIGHTS

# ROTOR WALL LIGHT

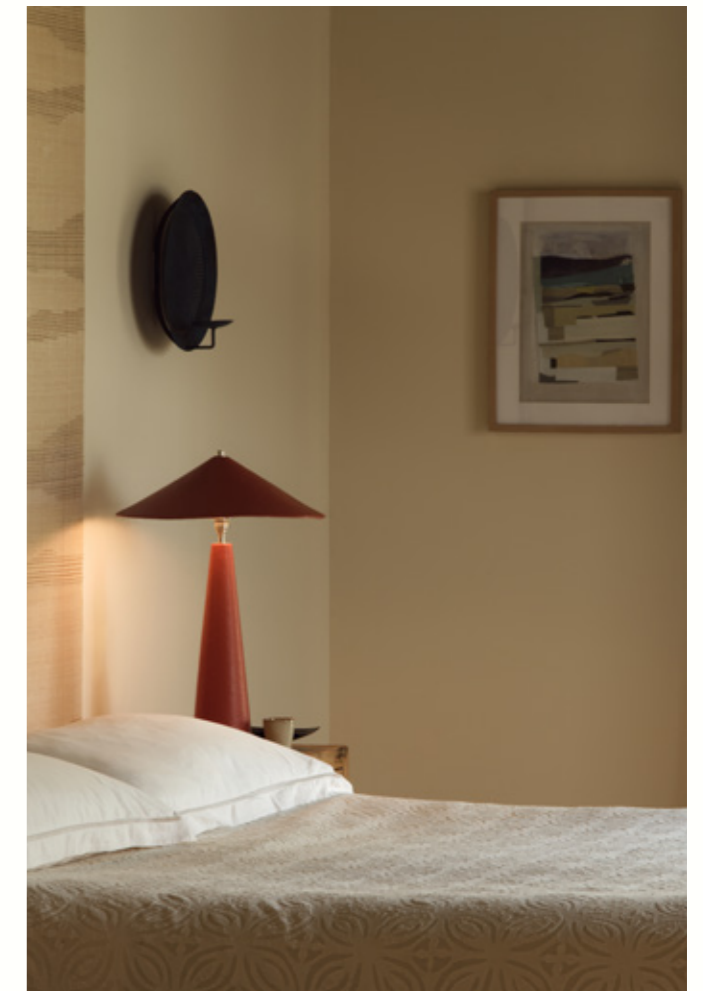
The Rotor is an evolution of our two compact, 1950s-inspired 'Diabolo' lights. A graceful and subtle wall light that is especially tailored to reading corners and bedsides thanks to its adjustable 360-rotating shade. A simple and functional yet elegantly mobile design, it is available as a hard-wired or plug-in light.



# TABELE LAMPS

# PARASOL TABLE LAMP

The statuesque Parasol echoes the grander, more expressive forms of Art Nouveau lighting design. Its tall stem, which is weighted at the base, casts a direct light, making it an ideal reading lamp.





# PAVILION TABLE LAMP

The versatile Pavilion brings a shaded, atmospheric glow to any part of the home. The light's low, rounded form is loosely based on the shapes of Art Nouveau lighting design.



# SATELLITE UPLIGHTER

The Satellite is an impactful statement light that also functions in the home as an artwork. The other-worldly mood of 1970s 'space age' design is evoked in its curving sculptural form, with the uplighter element making it a versatile and elevating addition to any surface (even the floor).



# HOURGLASS UPLIGHTER

Our most sculptural design, the Hourglass can be placed on a table or on the floor to subtly transform a space. Its palindrome shape creates a direct light that is diffused by a deep shade.





## DIABOLO UPLIGHTER

The diabolo-shaped lights of the 1950s inspired this versatile uplighter. As our most compact light, the Diabolo works especially well on bookcases, shelves or mantels.



# CELLING LIGHTS



## BELL PENDANT

The Bell is available as a pendant lamp or surface mount. The deep sides cover the bulb, giving a shaded, atmospheric light and making the colour or pattern finish more prominent than our other ceiling lights. Designed to also work well in pairs or multiples, for example in kitchens and corridors.



# BELL FLUSH MOUNT

The Bell is available as a pendant lamp or surface mount. The deep sides cover the bulb, giving a shaded, atmospheric light and making the colour or pattern finish more prominent than our other ceiling lights. Designed to also work well in pairs or multiples, for example in kitchens and corridors.



# CLOCHE PENDANT

The bell-like Cloche has an adaptable cord, and is equally suited to hanging low over a dining table or sitting high in a bedroom. At eye line, the tactility of the surface is emphasised.





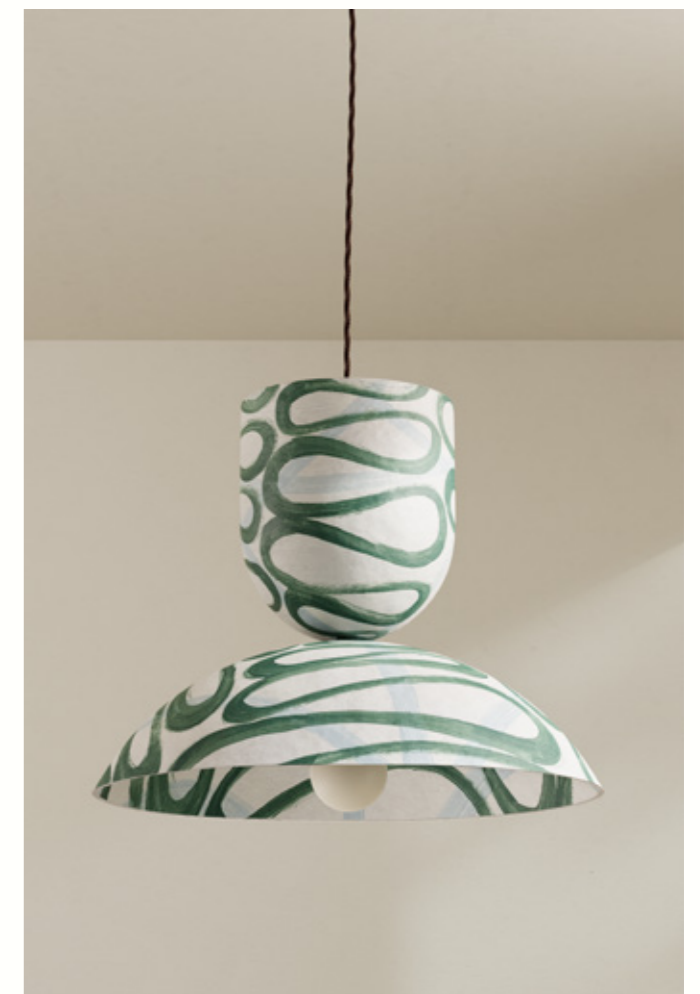
# TRAPEZE SURFACE MOUNT

Especially suited to lower ceilings, the Trapeze is a sculptural yet functional addition to living and working spaces. Its jaunty imperfection brings a charm that belies its simplicity.



# BUOY PENDANT

Our statement light, the Buoy brings a commanding presence to all spaces. Made up of several balanced elements to create a grand, sculptural composition.





## DIABOLO SURFACE MOUNT

The Diabolo was inspired by the bold symmetrical diabolo lights of the 1950s. Offering a less conventional alternative to the classic spotlight, it's an ideal companion to corridors and small rooms.



# FINISHES



CELADON



BRICK



CLOVE



flex colour



flex colour



flex colour



shade interior



shade interior



shade interior

All floor lamp designs are available in the above finishes with corresponding flex for pendants. The shade interior colour refers to the colour on the underside or inside of the shade.



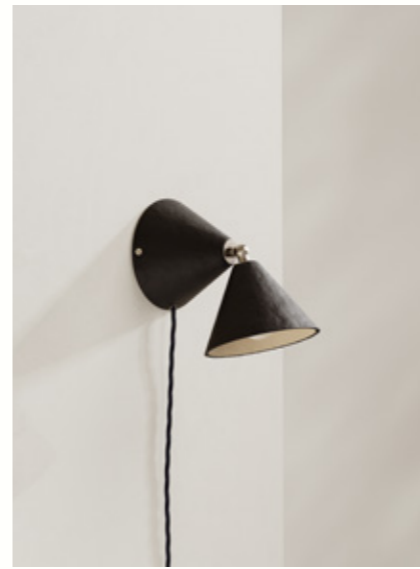
CELADON



CELADON/CITRINE



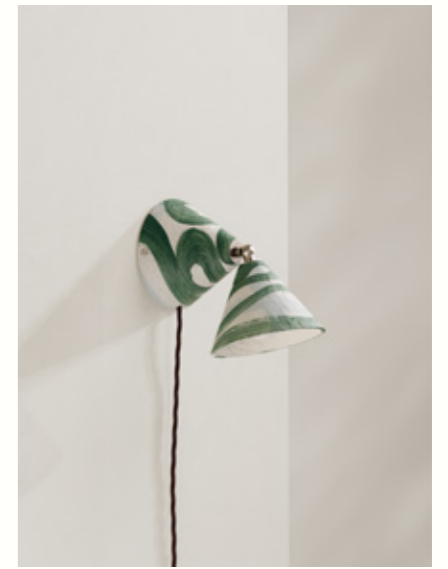
BRICK



CLOVE



CITRINE



SERPENT



flex colour



flex colour



flex colour



flex colour



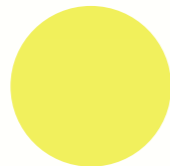
flex colour



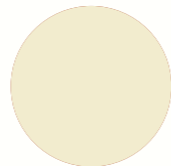
flex colour



shade interior



shade interior



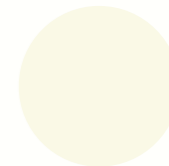
shade interior



shade interior



shade interior



shade interior

All wall light designs are available in the above finishes with corresponding flex for pendants. The shade interior colour refers to the colour on the underside or inside of the shade.



CELADON



CELADON/CITRINE



BRICK



CLOVE



CITRINE



SERPENT



flex colour



flex colour



flex colour



flex colour



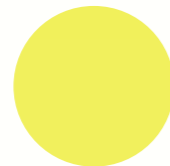
flex colour



flex colour



shade interior



shade interior



shade interior



shade interior



shade interior



shade interior

All table lamp designs are available in the above finishes with corresponding flex. The shade interior colour refers to the colour on the underside or inside of the shade.



CELADON



CELADON/CITRINE



BRICK



CLOVE



CITRINE



SERPENT



flex colour



flex colour



flex colour



flex colour



flex colour



flex colour



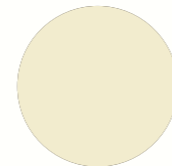
shade interior



shade interior



shade interior



shade interior



shade interior



shade interior

All ceiling light designs are available in the above finishes with corresponding flex for pendants. The shade interior colour refers to the colour on the underside or inside of the shade.



# PRICE LIST - UK

## FLOOR LAMPS

### TOTEM UPLIGHTER

Height -1.9 m  
Diameter -40 cm  
E27 LED lamp  
Nickel plated brass fittings

*Plain*      *Retail*  
**£4,200**

## WALL LIGHTS

### ROTOR WALL LIGHT

Height -16.5 cm  
Diameter -12.5 cm  
G9 LED lamp  
Glass G9 cover, nickel fittings

*Hardwired*      *Retail*  
*Plain*      **£375**  
*Pattern*      **£435**

*Plug-in*      *Retail*  
*Plain*      **£405**  
*Pattern*      **£465**

## TABLE LAMPS

### PARASOL TABLE LAMP

Height -57 cm  
Diameter -40.5 cm  
Shade harp, E14 LED lamp  
Nickel plated brass fittings

*Plain*      *Retail*  
**£540**  
*Pattern*      **£600**

## PAVILION TABLE LAMP

Height -36.5 cm  
Diameter -40.5 cm  
Shade harp, E14 LED lamp  
Nickel plated brass fittings

*Plain*      *Retail*  
**£480**  
*Pattern*      **£540**

### SATELLITE TABLE LAMP

Height -57 cm  
Diameter -40.5 cm  
Shade harp, E14 LED lamp  
Nickel plated brass fittings

*Plain*      *Retail*  
**£540**  
*Pattern*      **£600**

### HOURLASS UPLIGHTER

Height -40 cm  
Diameter -17 cm  
E14 LED lamp  
Nickel plated brass fittings

*Plain*      *Retail*  
**£420**  
*Pattern*      **£480**

### DIABOLO UPLIGHTER

Height -16.5 cm  
Diameter -12.5 cm  
G9 LED lamp  
Nickel plated brass fittings

*Plain*      *Retail*  
**£300**  
*Pattern*      **£360**

## CEILING LIGHTS

### BELL PENDANT

Height -27.5 cm  
Diameter -17 cm  
Drop 1.5m  
E27 LED lamp  
Nickel plated brass fittings

*Plain*      *Retail*  
**£435**  
*Pattern*      **£495**

### BELL SURFACE MOUNT

Height -27.5 cm  
Diameter -17 cm  
E27 LED lamp  
Nickel plated brass fittings

*Plain*      *Retail*  
**£405**  
*Pattern*      **£465**

### CLOCHE PENDANT

Height -20.5 cm  
Diameter -40 cm  
Drop 1.5m  
E27 LED lamp  
Nickel plated brass fittings

*Plain*      *Retail*  
**£450**  
*Pattern*      **£510**

### TRAPEZE SURFACE MOUNT

Height -20.5 cm  
Diameter -40.5 cm  
E26 LED lamp  
Nickel fittings

*Plain*      *Retail*  
**£405**  
*Pattern*      **£465**

## BUOY PENDANT

Height -32.5 cm  
Diameter -40 cm  
Drop 1.5m  
E27 LED lamp  
Nickel fittings

*Plain*      *Retail*  
**£510**  
*Pattern*      **£570**

### DIABOLO SURFACE MOUNT

Height -16.5 cm  
Diameter -12.5 cm  
G9 LED lamp  
Nickel fittings

*Plain*      *Retail*  
**£285**  
*Pattern*      **£345**

## \*VAT

All prices are listed *inclusive* of VAT in GBP.  
Payment of applicable duties and taxes are the  
responsibility of the purchaser.

## CUSTOMISATION

### UK FLEX

Additional flex	+£25 per metre
Custom flex	+£25 per metre
Bespoke flex	+£160 for upto 4m

*For other wiring options please contact us.*

### PAINT OPTIONS

Colour customisation	+£50 per colour
Bespoke colour	+£160 for 1 colour
	+£85 for additional colours

### \*VAT

*All prices are listed inclusive of VAT in GBP.*

## NOTES

### Availability

Made to order. Lead time 8-10 weeks to dispatch.

### Shipping

We ship worldwide. Prices do not include shipping. Please contact us for shipping costs. For international shipping, taxes and duties should be paid on arrival.

### Finished by hand

Please note our products are hand-painted so each is unique, there may be some variation in colour and finish.

### Natural materials

Our lights are made from natural materials and may exhibit slight differences in shape, size and texture.

### Bulbs

Prices do not include bulbs. Please use LED fittings with our lights as they are made of natural materials that could be affected by heat from a bulb. (Plus they are more environmentally friendly.)

We recommend the following bulbs:

E14 – Tala Porcelain I dimmable LED

E27 – Tala Porcelain II dimmable LED

G9 – Casell L2.5G9 dimmable LED

### Bespoke

Bespoke and customised orders are available. Please contact us to discuss options.

# ENQUIRIES

For all sales enquiries please  
contact Rowena Morgan-Cox  
at [info@palefirestudio.com](mailto:info@palefirestudio.com).

We look forward to hearing  
from you.

With many thanks,

Palefire Team

 [@palefire\\_studio](https://www.instagram.com/palefire_studio)



7 VANGUARD COURT  
LONDON SE5 8QT

PALEFIRESTUDIO.COM  
INFO@PALEFIRESTUDIO.COM